



Grade 8 100 Lesson Pathway



8A

Perspectives & Narrative

16 Lessons



SUB-UNITS (Lessons)

Get Started (1–4)

Narrative Writing (1–11)

Perspectives & Narrative Unit Reading Assessment

OVERARCHING EXPECTATIONS	ELA.8.OE.1, ELA.8.OE.2, ELA.8.OE.3, ELA.8.OE.4, ELA.8.OE.5
APPLICATIONS OF READING*	ELA.AOR.1, ELA.8.AOR.1.1, ELA.8.AOR.1.2, ELA.8.AOR.2.2, ELA.AOR.4, ELA.8.AOR.4.1, ELA.AOR.5, ELA.8.AOR.5.1, ELA.8.AOR.5.2, ELA.AOR.6, ELA.8.AOR.6.1, ELA.AOR.7, ELA.8.AOR.7.1, ELA.8.AOR.7.1a, ELA.8.AOR.7.1c, ELA.AOR.10, ELA.8.AOR.10.1
WRITTEN AND ORAL COMMUNICATIONS*	ELA.C.1, ELA.8.C.1.1, ELA.C.2, ELA.8.C.2.1, ELA.8.C.2.1b, ELA.C.3, ELA.8.C.3.1, ELA.8.C.3.1a, ELA.8.C.3.1b, ELA.8.C.3.1c, ELA.8.C.3.1d, ELA.8.C.3.1e, ELA.8.C.3.1f, ELA.C.5, ELA.8.C.5.1, ELA.C.6, ELA.C.7, ELA.8.C.7.1, ELA.8.C.7.1a, ELA.8.C.7.1b, ELA.8.C.7.1c, ELA.C.8, ELA.8.C.8.1, ELA.8.C.8.1a, ELA.C.9, ELA.8.C.9.1b, ELA.8.C.9.1c

Amplify ELA
SOUTH CAROLINA

© 2023 Amplify Education, Inc.



8B

Liberty & Equality

25 Lessons



SUB-UNITS (Lessons)

Narrative of the Life of Frederick Douglass

by Frederick Douglass (1–14)

The Gettysburg Address (1–5)

Write an Essay (1–5)

Liberty & Equality Unit Reading Assessment

OVERARCHING EXPECTATIONS	ELA.8.OE.1, ELA.8.OE.2, ELA.8.OE.3, ELA.8.OE.4, ELA.8.OE.5, ELA.8.OE.6
APPLICATIONS OF READING*	ELA.AOR.1, ELA.8.AOR.1.1, ELA.8.AOR.1.2, ELA.AOR.2, ELA.8.AOR.2.2, ELA.AOR.4, ELA.8.AOR.4.1, ELA.AOR.5, ELA.8.AOR.5.2, ELA.8.AOR.5.3, ELA.AOR.6, ELA.8.AOR.6.1, ELA.AOR.7, ELA.8.AOR.7.1, ELA.8.AOR.7.1a, ELA.8.AOR.7.1b, ELA.8.AOR.7.1c, ELA.AOR.8, ELA.8.AOR.8.1, ELA.8.AOR.8.1a, ELA.8.AOR.8.1b, ELA.8.AOR.8.1c, ELA.AOR.9, ELA.AOR.10, ELA.8.AOR.10.1
RESEARCH	ELA.R.1, ELA.8.R.1.4
WRITTEN AND ORAL COMMUNICATIONS*	ELA.C.1, ELA.8.C.1.1, ELA.8.C.1.1a, ELA.8.C.1.1d, ELA.C.2, ELA.8.C.2.1, ELA.8.C.2.1a, ELA.8.C.2.1b, ELA.8.C.2.1c, ELA.8.C.2.1d, ELA.8.C.2.1e, ELA.8.C.2.1f, ELA.C.4, ELA.8.C.4.1, ELA.8.C.4.1a, ELA.8.C.4.1e, ELA.8.C.4.1f, ELA.8.C.4.1g, ELA.C.5, ELA.8.C.5.1, ELA.C.7, ELA.8.C.7.1, ELA.8.C.7.1a, ELA.8.C.7.1b, ELA.8.C.7.1c, ELA.C.8, ELA.8.C.8.1, ELA.8.C.8.1b, ELA.C.9, ELA.8.C.9.1a, ELA.8.C.9.1b, ELA.8.C.9.1c

Amplify ELA offers 180 days of instruction, but we know that teachers may want to reserve some instructional time for other favorite projects. Here's an abridged version of our curriculum that ensures full standards coverage in only 100 lessons. This pathway includes five Unit Reading Assessments, two essays, and a mix of informational and literary texts. You can always add on Quests, Poetry in America, Novel Guides, and all your other favorite content.



8C

Science & Science Fiction

18 Lessons



SUB-UNITS (Lessons)

Gris Grimly's Frankenstein by Mary Shelley and Gris Grimly (1–17)

Science & Science Fiction Unit Reading Assessment

OVERARCHING EXPECTATIONS	ELA.8.OE.1, ELA.8.OE.2, ELA.8.OE.3, ELA.8.OE.4, ELA.8.OE.5, ELA.8.OE.6
APPLICATIONS OF READING*	ELA.AOR.1, ELA.8.AOR.1.1, ELA.AOR.2, ELA.8.AOR.2.1, ELA.AOR.3, ELA.8.AOR.3.1, ELA.AOR.5, ELA.8.AOR.5.1, ELA.AOR.6, ELA.8.AOR.6.1, ELA.AOR.7, ELA.8.AOR.7.1, ELA.8.AOR.7.1a, ELA.8.AOR.7.1c, ELA.AOR.8, ELA.8.AOR.8.1, ELA.8.AOR.8.1c, ELA.AOR.9, ELA.AOR.10
WRITTEN AND ORAL COMMUNICATIONS*	ELA.C.1, ELA.8.C.1.1, ELA.8.C.1.1a, ELA.8.C.1.1b, ELA.8.C.1.1c, ELA.8.C.1.1e, ELA.C.2, ELA.8.C.2.1, ELA.8.C.2.1b, ELA.C.3, ELA.8.C.3.1, ELA.8.C.3.1a, ELA.8.C.3.1d, ELA.C.4, ELA.8.C.4.1, ELA.C.7, ELA.8.C.7.1, ELA.8.C.7.1a, ELA.8.C.7.1b, ELA.C.8, ELA.8.C.8.1, ELA.8.C.8.1a, ELA.8.C.8.1b, ELA.C.9, ELA.8.C.9.1a, ELA.8.C.9.1b

Grade 8 100 Lesson Pathway



8D

Shakespeare's Romeo & Juliet

17 Lessons



SUB-UNITS (Lessons)

Romeo and Juliet by William Shakespeare (1–16)

Shakespeare's Romeo & Juliet Unit Reading Assessment

OVERARCHING EXPECTATIONS	ELA.8.OE.1, ELA.8.OE.2, ELA.8.OE.3, ELA.8.OE.4, ELA.8.OE.5
APPLICATIONS OF READING*	ELA.AOR.1, ELA.8.AOR.1.1, ELA.8.AOR.1.2, ELA.AOR.2, ELA.8.AOR.2.1, ELA.AOR.3, ELA.8.AOR.3.1, ELA.AOR.5, ELA.8.AOR.5.1, ELA.AOR.6, ELA.8.AOR.6.1, ELA.AOR.7, ELA.8.AOR.7.1, ELA.8.AOR.7.1a, ELA.8.AOR.7.1b, ELA.8.AOR.7.1c, ELA.AOR.8, ELA.8.AOR.8.1, ELA.8.AOR.8.1a, ELA.8.AOR.8.1b, ELA.AOR.9, ELA.AOR.10, ELA.8.AOR.10.1
WRITTEN AND ORAL COMMUNICATIONS*	ELA.C.1, ELA.8.C.1.1, ELA.8.C.1.1b, ELA.C.2, ELA.8.C.2.1, ELA.8.C.2.1b, ELA.8.C.2.1d, ELA.C.6, ELA.C.7, ELA.8.C.7.1, ELA.8.C.7.1a, ELA.8.C.7.1c, ELA.C.8, ELA.8.C.8.1, ELA.8.C.8.1a, ELA.8.C.8.1b, ELA.C.9, ELA.8.C.9.1b, ELA.8.C.9.1c



8F

The Space Race Collection

24 Lessons



SUB-UNITS (Lessons)

Information Literacy (1–4)

Scavenger Hunt and Internet Research (1–4)

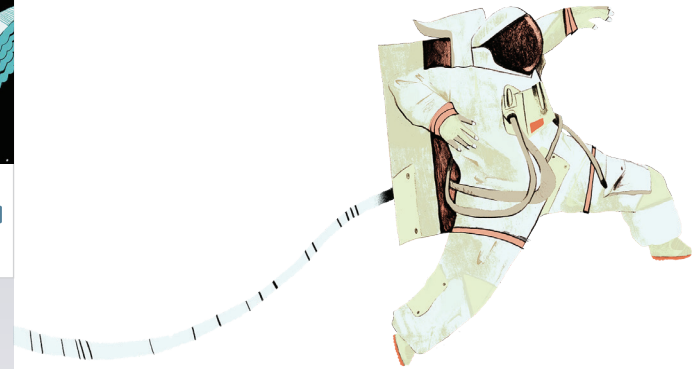
Space Blogs and Collection Research (1–4)

Socratic Seminar and Internet Research† (1–3)

Write an Essay‡ (1–8)

The Space Race Collection Unit Reading Assessment

OVERARCHING EXPECTATIONS	ELA.8.OE.1, ELA.8.OE.2, ELA.8.OE.3, ELA.8.OE.4, ELA.8.OE.5, ELA.8.OE.6
APPLICATIONS OF READING*	ELA.AOR.10, ELA.8.AOR.10.1
RESEARCH	ELA.R.1, ELA.8.R.1.1a, ELA.8.R.1.1b, ELA.8.R.1.2, ELA.8.R.1.3, ELA.8.R.1.4, ELA.8.R.1.5
WRITTEN AND ORAL COMMUNICATIONS*	ELA.C.1, ELA.8.C.1.1, ELA.8.C.1.1a, ELA.8.C.1.1b, ELA.8.C.1.1c, ELA.8.C.1.1d, ELA.8.C.1.1e, ELA.C.2, ELA.8.C.2.1, ELA.8.C.2.1a, ELA.8.C.2.1b, ELA.8.C.2.1c, ELA.8.C.2.1d, ELA.8.C.2.1e, ELA.8.C.2.1f, ELA.C.3, ELA.8.C.3.1, ELA.8.C.3.1a, ELA.8.C.3.1b, ELA.C.4, ELA.8.C.4.1, ELA.8.C.4.1a, ELA.8.C.4.1f, ELA.8.C.4.1g, ELA.C.5, ELA.8.C.5.1, ELA.C.7, ELA.8.C.7.1, ELA.8.C.7.1a, ELA.8.C.7.1b, ELA.8.C.7.1c, ELA.C.8, ELA.8.C.8.1, ELA.8.C.8.1a, ELA.8.C.8.1b, ELA.C.9, ELA.8.C.9.1a, ELA.8.C.9.1b



* To ensure full coverage of the Applications of Reading and Written and Oral Communications standards, we recommend using part of each Flex Day to work on vocabulary or grammar instruction. There are a total of 13 Flex Days in which to cover 1 Applications of Reading standard: ELA.8.AOR.9.1, as well as 3 Written and Oral Communications standards: ELA.8.C.4.1b, ELA.8.C.4.1c, and ELA.8.C.4.1d. See the Grammar Unit Topics for suggestions about how to sequence grammar instruction.

† Please skip Flex Day 4 in this sub-unit.

‡ This essay provides a choice of two prompts. To ensure full standards coverage, assign the argumentative prompt.